

A PLACE TO CALL HOME



TE WĀ
CONSORTIUM

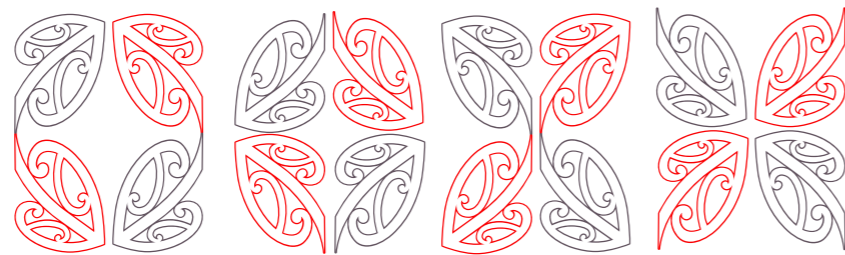
A place to call home

Ko te kāinga te whakaruruhau o te whanau;
ki te kore he kāinga ma te marangai te whanau e hemo.

*The home is the shelter of the whanau; if there is no home
the whanau becomes victim of all the elements.*

Kaumatua Joe Naden 2018
Te Aitanga a Hauiti te Iwi

TE WA KAINGA LTD | WHAKATAUKI - PROVERB



MANAAKI AROHANUI WHANAU HAUORA

Te WA Consortium was established in response to the national housing crisis being faced across New Zealand at this time. Many whanau have long given up on the prospect of their children and grandparents living in a healthy home and where affordability is a throw away line for politicians.

Te WA comes from the Whakatauki – proverb;

Nga Whetu o te Wa – The Stars of this Time

*Gifted to our team by Kaumatua Nau Epiha of Ngapuhi. It reflects the aspirations of the team to chart a new course as Maori did when navigating by the stars in support of whanau as they find their way to **a place to call home.***

Our team of qualified and registered professionals is committed to making home ownership accessible and affordable to families and communities throughout Aotearoa New Zealand.

Our homes are designed on tikanga Maori + Kiwi living practice to achieve optimal environmental design outcomes and healthy affordable living solutions for whanau, hapu and papakainga.

Who is Te WA Consortium and what services do they offer:

Te WA Kainga Ltd | *Not for Profit*

Directors George Clarke and Steve Hutana
Registered Architects offering Design and Project Management Services (Nationally)

Nga Whetu o te WA | *Not for Profit*

Directors Paul Wihongi and John Vucijch
SIP's Prefabrication home manufacturing specialist with a prefabrication factory located in Kaikohe Northland.

Bravo Construction Ltd

Directors Jo Christensen and Keith Burchett
LBP Certified builders providing on site SIPS assembly and construction and trade training Cadetship opportunities.



Kaupapa | Principles

Te WA Consortium promotes a holistic model of practice tailored to supply places (homes and spaces) through...

Prefabrication manufacturing + Architecture + Construction
+ Training + Social support = **P-A-C-T-S**

Te WA Consortium's approach is uniquely:

- Tikanga Maori
- Systems Focused
- Community Owned
- Values Based
- Design Led
- Multi-regional Economic Development driven

Our values are aligned with Tikanga Maori.

Kaitiakitanga | Environmental Responsibility

Best practice environmental design in both building design and site layout. This includes use of non-toxic materials that reduce carbon emissions and ongoing energy consumption, waste reduction, with water sensitive and ecological design features and minimizing earthworks.

Whanaungatanga | Families and Communities

A whole of life approach to designing houses for families so homes can easily be adapted to different stages of life, and different family groups. This includes flexibility to adapt houses for elderly, papakainga and the needs of children and providing multigenerational and extended family housing typologies within communities that create safe family friendly environments.

Manaakitanga | Improved Quality of Life

Our houses are designed for optimal health and well-being, so they are not just warm and dry but also affordable to heat and maintain. Homes are located to provide a connection to the land with space for growing food and interacting with friends and family and can be easily adapted to suit cultural and living preferences.

Kotahitanga | Working in Unison

Using our newly developed modular walling system called TRISIPS with our design and construction systems offers highly co-ordinated and streamlined efficient building to ensure quality homes. Utilising tikanga Maori design best practice ensures house designs work with the whenua/land, environmental conditions and character of existing neighbourhoods and is of a cohesive design quality whilst also being suited to whanau needs.



1. TAHI WHARE MANAAKI

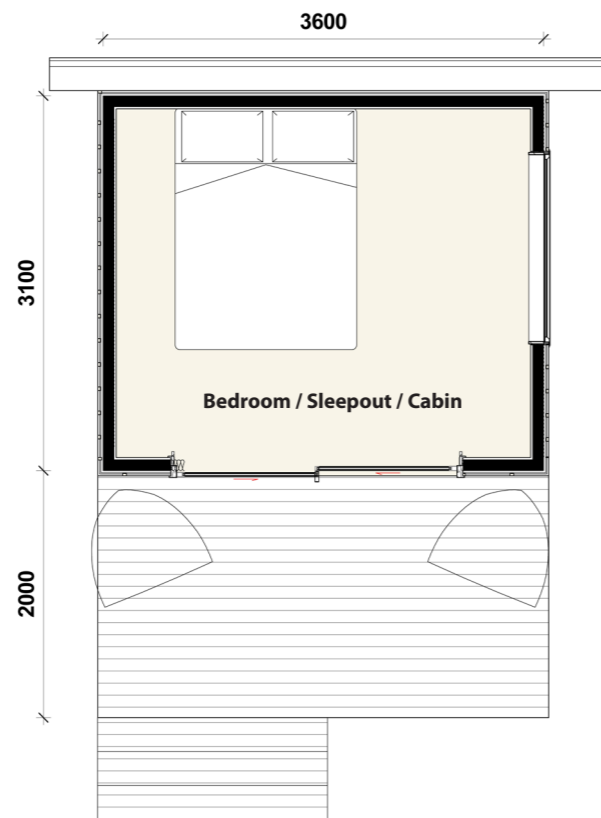
17.5m x 4m + deck | 2 Bedroom + Bathroom + Kitchen + Living
Floor area = 70m² (excludes deck)





2. RUA
WHARE TUMANAKO

3.6m x 3.1m + deck
Bedroom / Sleepout / Cabin
Floor area = 12m² (excludes deck)



3. TORU
WHARE MAHAKI

7.3m x 3.8m + deck | Bedroom + Living
Floor area = 26m² (excludes deck)

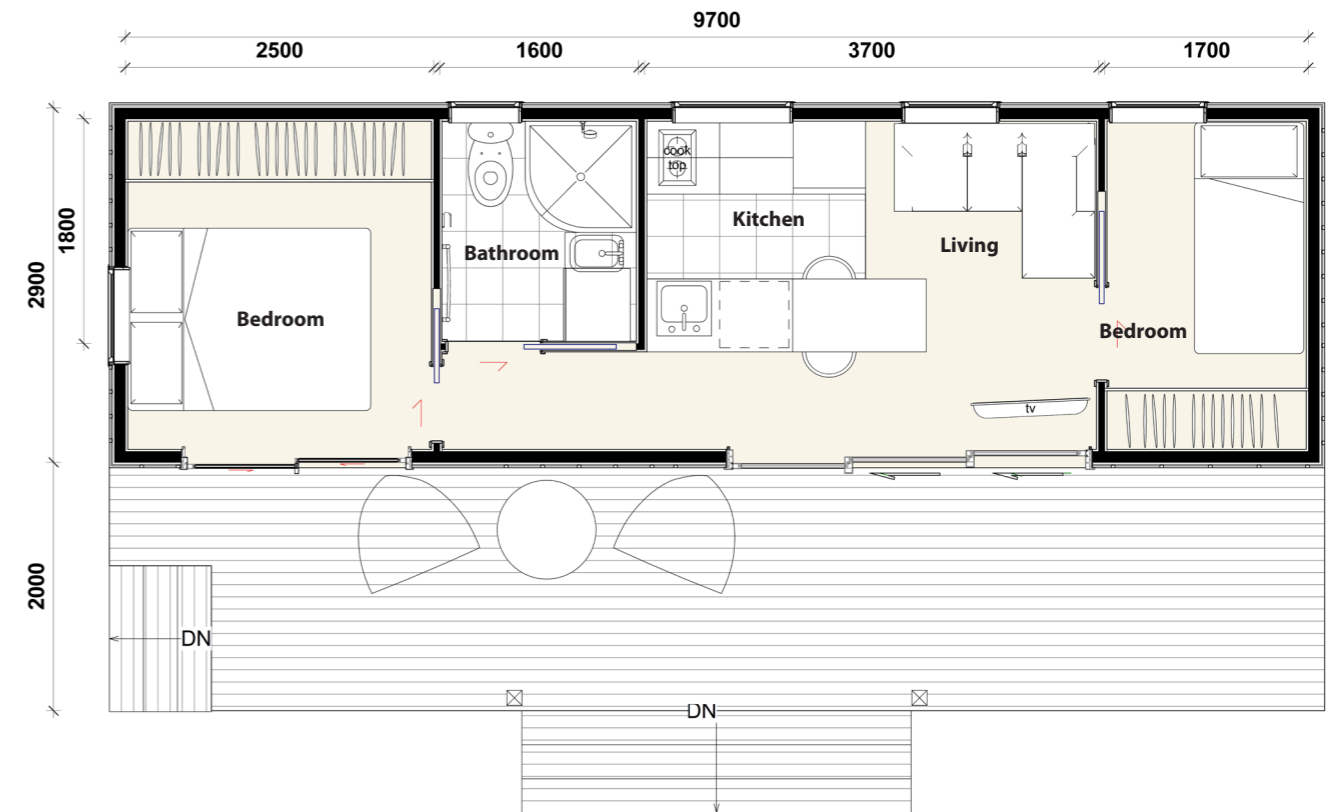


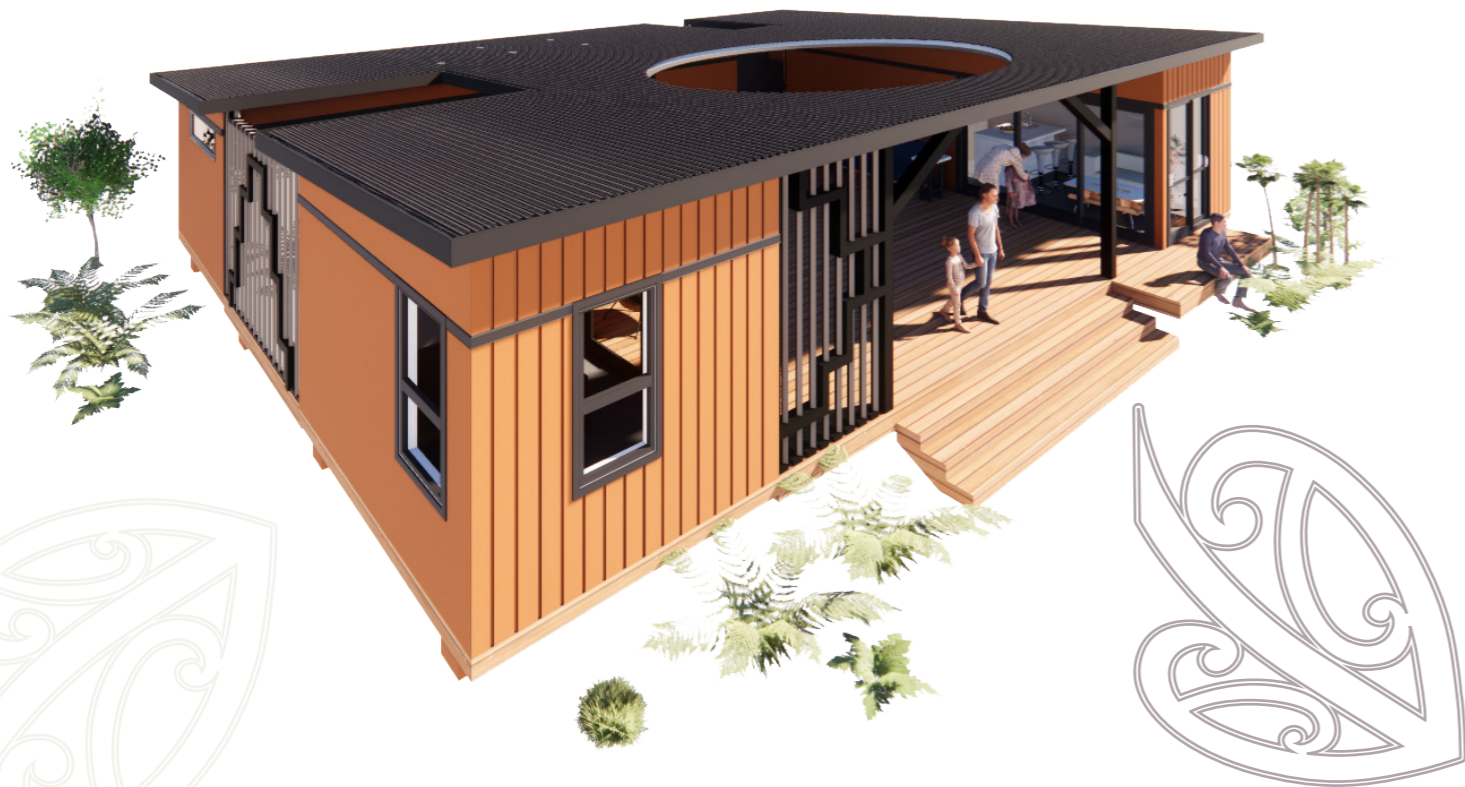


4. WHA
WHARE RANGIMARIE
 17.5m x 4m + deck
 Bedroom + Bathroom + Kitchen + Living
 Floor area = 32m² (excludes deck)



5. REMA
WHARE ATAWHAI
 9.7m x 2.9m + deck | 2 Bedroom + Bathroom + Kitchen + Living
 Floor area = 30m² (excludes deck)





6. **ONO**
WHARE NGAKAU MA
 17.5m x 4m + deck | 4 Bedroom + 2 Bathroom + Kitchen + 2 Living
 Floor area = 74m² (excludes deck)



Our team of qualified and registered professionals is committed to making home ownership accessible and affordable to families and communities throughout Aotearoa New Zealand.

Our homes are designed on tikanga Maori + Kiwi living practice to achieve optimal environmental design outcomes and healthy affordable living solutions for whanau, hapu and papakainga.



For more information contact

Steve Hutana 021 023 61696 | steven@tewakainga.org
George Clarke 027 450 8256 | george@tewakainga.org

